

## Superintendent's Executive Cabinet

### Administrative Organization

## Surry County Board of Education

### Superintendent

Travis L. Reeves, Ed.D.

### Finance Officer

Donna Bryant

### Assistant Superintendent

Jill Y. Reinhardt, Ed.D.

- Career and Technical Education
- College and Career Readiness
- Exceptional Children Services
- Federal Programs
- Grants
- Instructional Technology
- Internal /External Relations
- Leadership Development
- Magnet Schools
- PK-12 Curriculum and Instruction
- Principal Support/Evaluation
- Professional Development
- Standard Course of Study
- Strategic Planning

### Assistant Superintendent

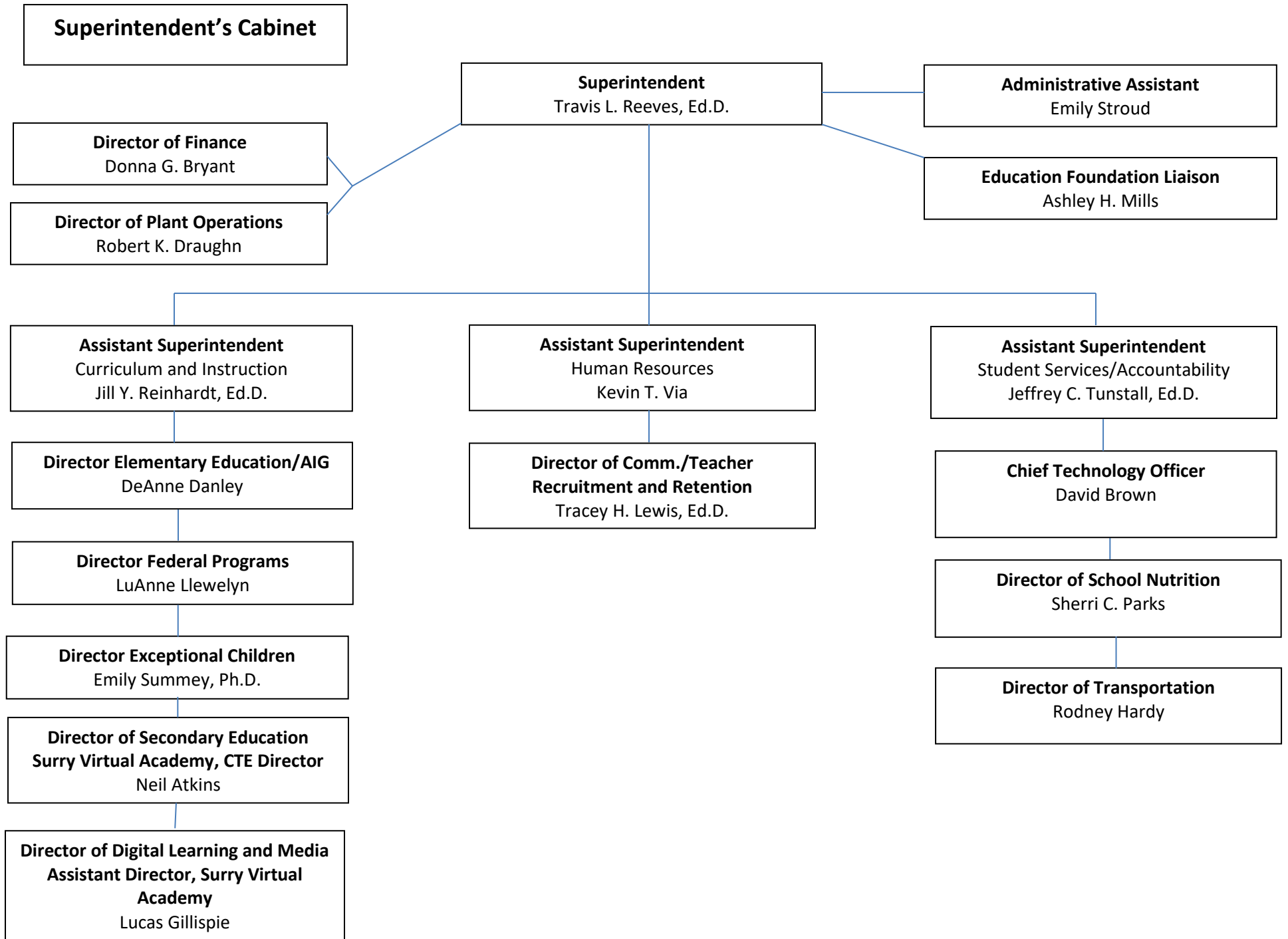
Kevin T. Via

- Athletics
- Civil Rights Compliance
- Compensation and Benefits
- Internal/External Relations
- North Carolina Educator Evaluation System
- Operations
- Principal Support/Evaluation
- Public School Works
- Recruiting and Induction
- School Volunteer Screening
- Staffing
- Student Reassignment
- Title II / Highly Qualified Teachers and Administrators
- Title IX Compliance

### Assistant Superintendent

Jeffrey C. Tunstall, Ed.D.

- Assessment, Research and Accountability
- Attendance and Student Accounting
- Civil Rights Compliance
- Compliance/Quality Assurance
- Counseling Services
- Field Trips
- Health Services
- Homeless and Foster Education Services
- Information Systems
- Internal /External Relations
- Policy
- Principal Support/Evaluation
- School Nutrition
- School Resource Officers
- School Safety/Security
- Student Support Services
- Technology Operations
- Transportation



**Office of  
Curriculum and Instruction**

**Assistant Superintendent**  
Jill Y. Reinhardt, Ed.D.

**Administrative Assistant**  
Dove Hunter

**Director Elementary Education/AIG**  
DeAnne Danley

**Director of Federal Programs**  
LuAnne Llewellyn

**Director of Secondary Education,  
Surry Virtual Academy**  
**CTE Director**  
Neil Atkins

**CTE/Technology Assistant**  
Amanda Taylor

**Director of Digital Learning and  
Media**  
**Assistant Director, Surry Virtual  
Academy**  
Lucas Gillispie

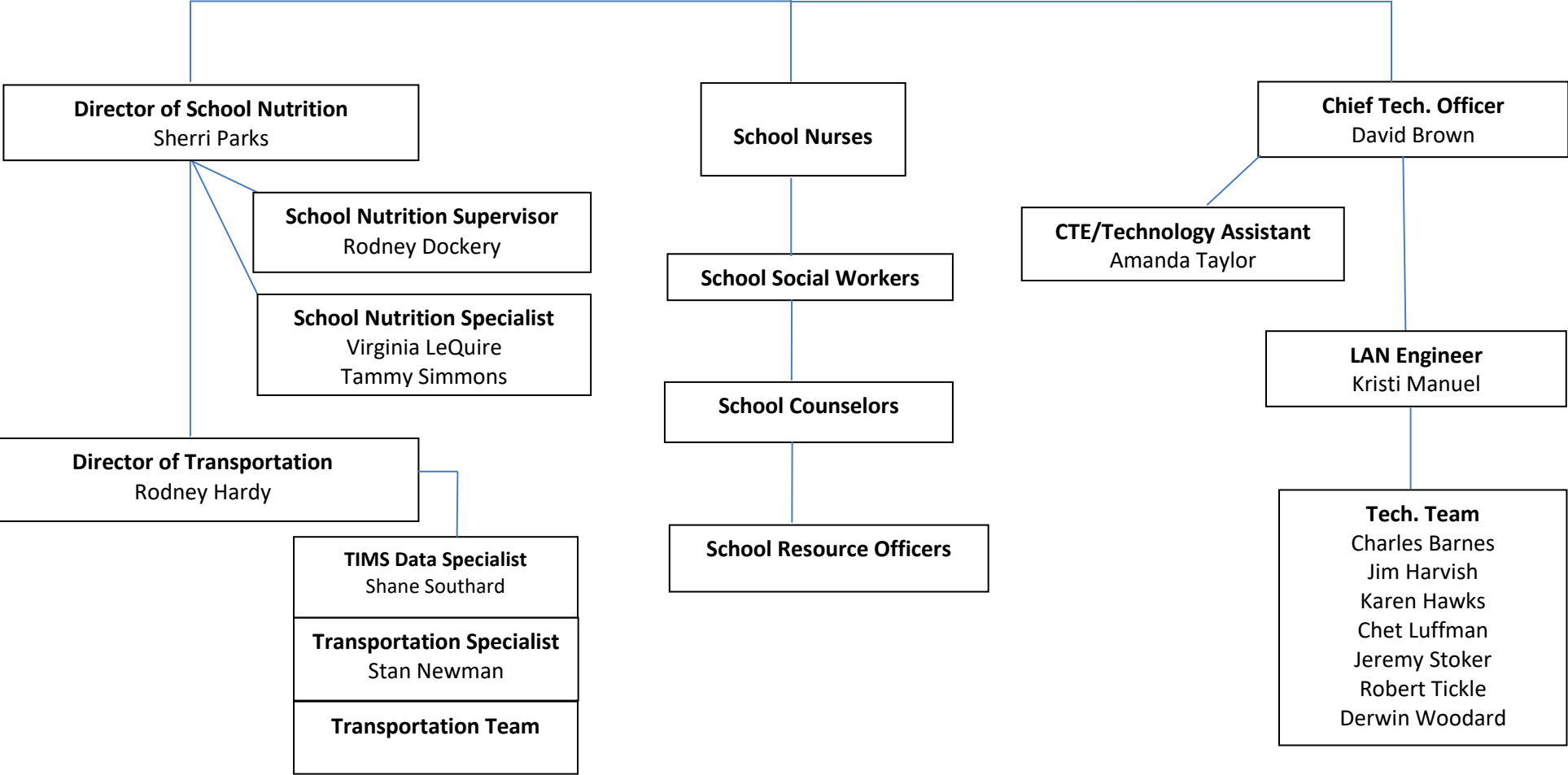
**Director of Exceptional Children**  
Emily Summey, Ph.D.

**Administrative Assistant**  
Robin Norman  
**EC Data Manager**  
Lisa Snow  
**Pre-K Coordinator**  
Kayla Norman

**Office of  
Student Services/Accountability**

**Assistant Superintendent**  
Jeffrey C. Tunstall, Ed.D.

**Administrative Assistant**  
Regina Richardson



**Office of  
Human Resources/Operations**

**Assistant Superintendent**  
Kevin T. Via

**Licensure Specialist/HRMS**  
Carolyn Simpson

**Health Benefits/WC/Disability**  
Donna Coe

**Receptionist/Licensure**  
Amy Reece

**Custodians**  
Ellen Angel, Robby Easter

**Director of Comm./Teacher  
Recruitment and Retention**  
Tracey H. Lewis, Ed.D.

**Administrative Assistant**  
Renee Moore

**District-Wide Athletic Director**  
Chuck Graham

**Administrative Assistants**

**Gail Hawks**

**Plant Operations**

**Dove Hunter**

**PK-12 Curriculum, Instruction/County-Wide Events, Federal Programs, Migrant Education**

**Renee Moore**

**Communications/Teacher Recruitment and Retention**

**Stan Newman**

**Transportation Services**

**Robin Norman**

**Exceptional Children**

**Regina Richardson**

**Student Services and Accountability**

**Carolyn Simpson**

**Licensure  
Human Resources**

**Emily Stroud**

**Board of Education  
Superintendent's Office**

**Amanda Taylor**

**Technology  
Career and Technical Education**

# School Administration

## High School Principals

**East Surry**  
Jared Jones

**North Surry**  
Paige Badgett

**Surry Central**  
Celia Hodges

**Surry Early College**  
Amber Flippen

## Middle School Principals

**Central Middle**  
Bill Goins

**J. Sam Gentry Middle**  
Brandon Whitaker

**Meadowview Magnet**  
Shelley Goins, Ed.D.

**Pilot Mountain Middle**  
Amy Harris

## Elementary Principals

**Cedar Ridge**  
Donna Bledsoe

**Copeland**  
Margaret Spicer

**Dobson**  
Sharia Templeton

**Flat Rock**  
Dana Draughn

**Franklin**  
Molly Anderson

**Mountain Park**  
Janet Sutphin

**Pilot Mountain Elementary**  
Alison York

**Rockford**  
Jodi Southern

**Shoals**  
Kristin Blake

**Westfield**  
Laura Whitaker

**White Plains**  
Nicole Hazelwood

# School Administration

## High School Asst. Principals

**East Surry**  
Colby Beamer  
Shannon DuPlessis

**North Surry**  
Amanda Adams  
Michael Bodnar

**Surry Central**  
Cheryl Hicks  
DJ Sheets

**Surry Early College**

## Middle School Asst. Principals

**Central Middle**  
Carla Coble

**J. Sam Gentry Middle**  
Kara Martin

**Meadowview Magnet Middle**  
Matt Scott

**Pilot Mountain Middle**  
Jonathan Frasher

## Elementary Asst. Principals

**Cedar Ridge**  
Jenny Alyn Key

**Copeland**  
Catherine Dollywhite

**Dobson**  
Blair Lambert

**Flat Rock**  
James Martin

**Franklin**  
Lori Gammons

**Mountain Park**  
-

**Pilot Mountain Elementary**  
Matthew White

**Rockford**  
Renee Bowman

**Shoals**  
Catherine Dollywhite

**Westfield**  
James Martin

**White Plains**  
Kelly Waters



**Superintendent's Office**

**Superintendent**  
Travis L. Reeves, Ed.D.

**Administrative Assistant**  
Emily Stroud

**Education Foundation Liaison**  
Ashley H. Mills

**Director of Plant Operations**  
Robert K. Draughn

**Director of Finance**  
Donna G. Bryant

**Administrative Assistant**  
Gail Hawks

**Plant Operations Team**  
Boiler Techs.  
Carpenters  
Electricians  
Groundskeepers  
HVAC  
Maintenance  
Plumbers

**Accounts Payable/Receivable**  
Shannon Collins  
Janice Marion

**Payroll**  
Melissa Hutchins  
Debbie Ramey

